

DOMINIQUE PERRAULT ARCHITECTURE

PRESS RELEASE
**DOMINIQUE PERRAULT
ARCHITECTURE**

11 JUNE – 22 SEPTEMBER 2008

GALERIE SUD, LEVEL 1

Direction de la communication

75191 Paris Cedex 04

director of communications

Laurent Glépin

press relations manager

Isabelle Danto

telephone

+ 33 (0) 1 44 78 42 00

press officer

Quentin Farella

telephone

+ 33 (0) 1 44 78 49 87

fax

+ 33 (0) 1 44 78 13 02

e-mail

quentin.farella@centrepompidou.fr

The Centre Pompidou is to stage the first ever large-scale exhibition devoted to the work of French architect Dominique Perrault. With this, having earlier paid tribute to Christian de Portzamparc (1996), Renzo Piano (2000), Jean Nouvel (2001), Thom Mayne (2006) and Richard Rogers (2007), the Centre continues in its commitment to promoting knowledge and understanding of contemporary architecture through organising exhibitions on the world's great architects.

Dominique Perrault's name immediately calls to mind the Bibliothèque Nationale de France, an East Paris landmark which, conceived as a non-architecture, the simple delimitation of a volume around a garden, is today recognised as having inaugurated a new logic of the architectural object and its environment.

DPA –

Dominique Perrault Architecture

6 rue Bouvier - 75011 Paris

Astrid Rappel

telephone

+ 33 (0) 1 44 06 00 03

Sébastien Gravier

telephone

+ 33 (0) 1 44 06 00 20

e-mail

presse@d-p-a.fr

However, his 200 built and unbuilt projects across the world (among the former the Olympic Velodrome in Berlin, the New Mariinsky Theatre in Saint-Petersburg and the Ewha University in Seoul) form a body of work that cannot be represented by a single building, however emblematic, evidencing rather a continuous development, a perpetual search for groundbreaking forms of expression, from Spain to Russia, from Austria to Korea, from Italy to the United States.

Over more than a thousand square metres, the exhibition in the Galerie Sud will present the work of DPA – Dominique Perrault Architecture through models, photographs and drawings, while films by Richard Copans (Les Films d'Ici), specially commissioned for the exhibition, will offer a comprehensive survey of completed and current projects. .

The exhibition design exploits the architectural metal mesh that Perrault was the first to develop and use, which offers a key to his conception of space. His research on materials, on the emotional force of the play of matter and light, is driven by a minimalist vision in which the architectural space is generated by a calculated deployment of elements. For this is an architecture of matter, and Perrault creates not buildings but landscapes.

Simple forms and fundamental concepts transform the sites in which they are inscribed, in a minimal intervention unafraid to use empty space to create resonance.

The many projects included in the exhibition testify to the formal productivity of this approach and to its many virtues, environmental, urbanistic and social. Visitors will see in particular how the European Court of Justice in Luxembourg and Convention and Exhibition Centre in León, Spain, act as points of crystallization for wider urban plans that are rich in potential; how the layout of the new Ewha University campus in Seoul naturally and unemphatically guarantees an exceptionally high degree of energy efficiency; how the new Olympic Tennis Stadium in Madrid can adapt itself to changing requirements; how the New Mariinsky Theatre in Saint-Petersbourg is elegantly integrated into a sensitive World Heritage Site; and how this approach deals with the urbanistic and technical challenges represented by the skyscraper, whether in the two inclined hotel towers for the new Milan Fair Complex presently under construction, the Habitat Sky Hotel being built on Barcelona's Diagonal, or the twin towers that will serve as a gateway to the Donau City riverside quarter in Vienna.

The same themes find constantly changing expression in the other projects also presented: in France, the Rouen Sports Centre and a mixed-use building combining housing, offices and shops for Euralille, the Greater Perpignan administrative headquarters and other office buildings in the same town; in Spain, the seafront development and hotel in Tenerife, the León Convention Centre; in Italy, the redesign of the Piazza Garibaldi in Naples; in England, the Priory Park Pavilion, Reigate; in the Netherlands, housing and offices; and in Japan, an office tower in Osaka.

A selection of submissions for major competitions illuminates the genesis of architectural ideas and the process of landscape development, illustrating the distinctive features of the conceptual apparatus deployed by the firm: the Centre Pompidou, Metz; the Fondation Pinault on the Ile Seguin, west of Paris; the Afragola railway station, Naples; and, more recently, the Jean Bouin Stadium in Paris and the Tour Phare at La Défense. Presenting some sixty projects, the exhibition thus offers a first assessment of an extremely busy career. It is accompanied by a catalogue offering a comprehensive critical survey of Perrault's work, which also includes a previously unpublished interview revealing more personal and less well-known aspects of the architect's life and thought.

VISUALS FOR THE PRESS



01
Hôtel Industriel Jean-Baptiste Berlier
Paris, France
1986-1990
© Georges Fessy / DPA / ADAGP



02
Bibliothèque nationale de France
Paris, France
1989-1995
© Georges Fessy / DPA / ADAGP



03
Olympic Velodrome and Swimming Pool
Berlin, Germany
1992-1999
© Werner Huthmacher / DPA / ADAGP



04
Olympic Velodrome and Swimming Pool
Berlin, Germany
1992-1999
© Georges Fessy / DPA / ADAGP



05
APLIX Factory
Le Cellier, Nantes, France
1997-1999
© Georges Fessy/DPA/ADAGP



06
European Court of Justice
Luxembourg
1996-2008
© Perrault Projets/ADAGP



07
Habitat Sky Hotel
Barcelona, Spain
1999-2008
© Perrault Projets/ADAGP



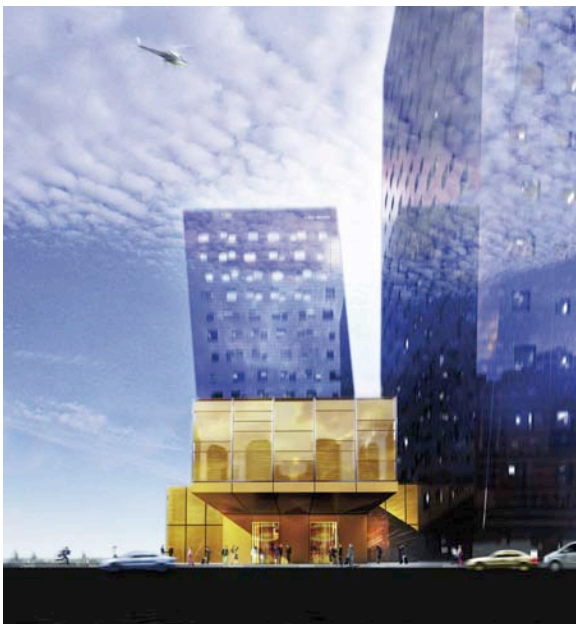
08
Olympic Tennis Stadium
Madrid, Spain
2002-2008
© Perrault Projets/ADAGP



09
New Mariinsky Theatre
Saint-Petersburg, Russia
2003-2009
© Perrault Projets / ADAGP



10
Ewha Women's University
Seoul, Korea
2004-2008
© Perrault Projets / ADAGP



11
Two Towers: 3-4* Hotel*
Milan, Italy
2006-2008
© Perrault Projets / ADAGP

PRACTICAL INFORMATION

Centre Pompidou

75191 Paris Cedex 4

telephone

00 33 (0)1 44 78 12 33

metro

Rambuteau ou Hôtel de Ville

Opening Hours

Exhibition open

11 am – 9 pm

every day ex. Tuesdays

Closed 1 May

Admission

10 or 12 euros,

depending on time of visit

concessions 8 or 9 euros

ticket valid one day for the

Musée National d'Art Moderne

and all exhibitions

Free for members

of the Centre Pompidou

(holders of the annual pass)

Information on

01 44 78 14 63

Buy your ticket on-line and

print at home:

www.centrepompidou.fr/

billetterie

AT THE SAME TIME AT THE CENTRE

TRACES DU SACRÉ

7 MAY – 11 AUGUST 2008

press officer

Anne-Marie Pereira

+ 33 (0) 1 44 78 40 69

MIROSLAV TICHÝ

7 MAY – 11 AUGUST 2008

press officer

Anne-Marie Pereira

+ 33 (0) 1 44 78 40 69

PRIX MARCEL DUCHAMP

TATIANA TROUVÉ

25 JUNE – 29 SEPTEMBER 2008

press officer

Dorothee Mireux

+ 33 (0) 1 44 78 46 60

MANAGEMENT

curator

Frederic Migayrou

curator at the Musée National

d'Art Moderne,

head of architecture and design