



Centre Pompidou Hanwha. Courtesy Hanwha Foundation of Culture, architect Jean-Michel Willmotte

PRESS RELEASE | INSTITUTIONAL | EXHIBITION

OPENING OF CENTRE POMPIDOU HANWHA IN SEOUL

Centre Pompidou Hanwha
50 63-ro, Yeongdeungpo District, Seoul, Corée du Sud

centrepompidou.fr
centrepompidou-hanwha.kr
#CentrePompidouHanwha
@centrepompidouhanwha

On June 4, 2026, as France and Korea celebrate the 140th anniversary of their diplomatic relations, the Hanwha Foundation of Culture and Centre Pompidou will open Centre Pompidou Hanwha in the Yeouido district. This inauguration will mark a landmark project of exchange and cooperation between the two countries and the birth of a new institution dedicated to modern and contemporary art in the heart of Seoul.

French President Emmanuel Macron, accompanied by Catherine Pégard, Minister of Culture, and Laurent Le Bon, President of Centre Pompidou, visited the site on April 3.

A New Milestone in Centre Pompidou's International Growth

As Centre Pompidou pursues its "Constellation", the ambitious cultural program in France and abroad that allows it to remain active and dynamic during the renovation of its historic building, two new Centre Pompidou locations, in Seoul and Brussels, will open in the coming months. This marks a significant milestone in the institution's history. The opening of Centre Pompidou Hanwha in Seoul strengthens Centre Pompidou's international vision and its commitment to deepening ties with local audiences and artistic scenes.

In the summer of 2023, under the auspices of the French Ministry of Culture and Ministry of Europe and Foreign Affairs, Centre Pompidou signed a partnership agreement for the creation of a Centre Pompidou Hanwha in South Korea. This exhibition space of over 11,000 m², designed by the architecture firm Wilmotte & Associés, will be housed in the iconic 63 Building in Yeouido, Seoul's financial district. The choice of Seoul as a partner city is no coincidence, as the Republic of Korea—and Seoul in particular—has seen its museum and cultural offerings grow and diversify significantly over the past decade. The exhibitions held there attract a large and diverse audience, both national and international, every year.

As part of this unique collaboration, and during the renovation of Centre Pompidou's historic building in Paris, a series of eight monographic and thematic exhibitions—two per year over five years—will be presented, drawing from the modern collections of Centre Pompidou's Musée national d'art moderne.

A New Institution Dedicated to Modern and Contemporary Art in the Heart of Seoul

Each year, Centre Pompidou Hanwha will present two major exhibitions based on the Centre Pompidou collection. Spread over nearly 1,500 m² in a space entirely dedicated to Centre Pompidou, these exhibitions will focus on the artists and movements of the 20th century. At the same time, the museum will host a series of contemporary art exhibitions, highlighting Korean artists and connecting the major narratives of art history with the country's cultural context. This programming will foster a dialogue between the great currents of art history and contemporary creation, and will offer cultural and educational activities for Korean audiences, complemented by an educational space where young visitors can explore and interact with works of art.

Designed as a museum resolutely turned toward the future, Centre Pompidou Hanwha builds on Centre Pompidou's tradition of innovation and offers a renewed interpretation of its collection in light of the Korean cultural and artistic context. Each exhibition will be based on original research and curated jointly by Korean and French teams. The museum will thus provide visitors with a new approach to modern and contemporary art and contribute to the development of curatorial research and artistic exchanges between Korea and France.

As a new cultural landmark in Seoul, Centre Pompidou Hanwha is also intended to become a place of encounter and sharing, open to both residents and tourists.

An Architecture of Light in the Heart of Seoul

The building rises over four levels and includes two vast exhibition galleries, each covering approximately 1,500 m². It is the result of a complete transformation of the former annex of the 63 Building, entrusted to the French architect Jean-Michel Wilmotte, who also designed the renovations of Incheon International Airport.

The pre-existing structure, which once housed an aquarium, has been reimagined to create a true "box of light." This design allows natural light to flood the interior during the day, while at night, the interior light diffuses outward, illuminating the city. On the exterior, a horizontal band of light interacts with the verticality of the 63 Building. The translucent double-glazed envelope evokes the curves of traditional Korean tiles.



Rendering of Centre Pompidou Hanwha, Courtesy Hanwha Foundation of Culture, architect Jean-Michel Wilmotte



Rendering of Centre Pompidou Hanwha, Courtesy Hanwha Foundation of Culture, architect Jean-Michel Wilmotte

A Cultural Bridge Between Korea, France, and the International Art Scene

Through its programming and scientific collaborations, Centre Pompidou Hanwha aims to foster exchanges between Korea, France, and the international art scene. It will thus contribute to Seoul's cultural influence and its affirmation as one of the major hubs of contemporary art in Asia.

An Inaugural Exhibition Featuring the Major Figures of Cubism

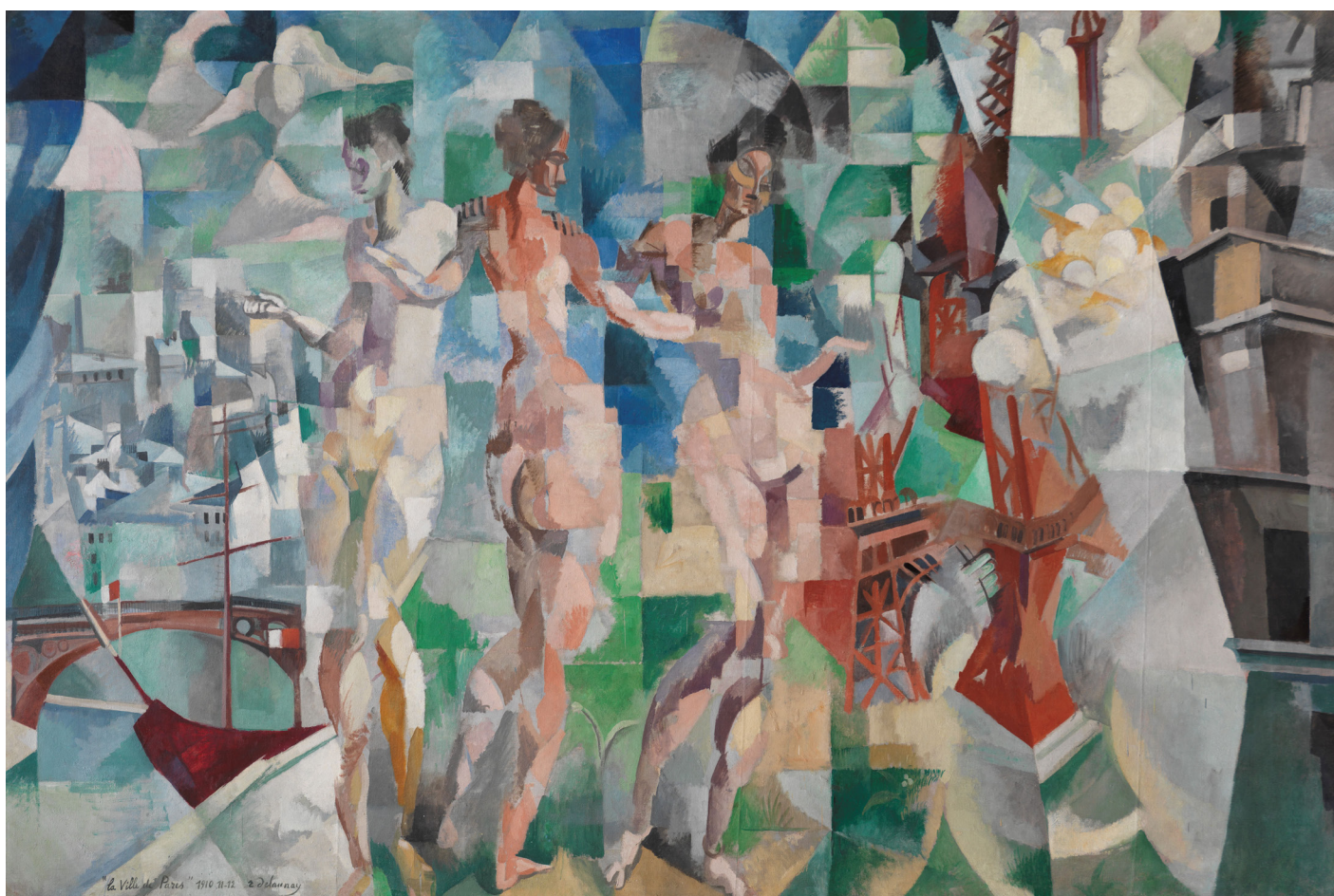
The inaugural exhibition, "The Cubists: Inventing Modern Vision," presented from June 4, 2026, will draw from Centre Pompidou's collection and occupy the museum's two main galleries, covering more than 3,000 m² of exhibition space. It is the result of a joint curatorial effort between Centre Pompidou in Paris and Centre Pompidou Hanwha.

By choosing cubism—a major movement that profoundly renewed the way we see and represent the world—Centre Pompidou

Hanwha makes a strong symbolic statement for its opening. The exhibition brings together works by leading figures of the movement, including Pablo Picasso, Georges Braque, Juan Gris, Fernand Léger, and Sonia and Robert Delaunay, as well as lesser-known artists in Korea, such as Albert Gleizes, Amédée Ozenfant, and Natalia Gontcharova.

Organized chronologically, the exhibition traces the emergence, spread, and international development of cubism. Divided into eight sections, it features around 90 paintings and sculptures by more than 40 artists, many of which are major works never before shown in Korea.

A special section, KOREA FOCUS, explores the role of Paris in the formation of Korean modern art in the early 20th century. By examining the exchanges between Western cubism and various Korean artistic fields—visual arts, photography, literature, and dance—this section highlights how the "modern vision" born of cubism nourished the development of Korean modern and contemporary art.



Robert Delaunay, *The City of Paris*
1910-1912, 267 × 406 cm
Collection Centre Pompidou, Paris
© Centre Pompidou, MNAM-CCI/Georges Meguerditchian/Dist. GrandPalaisRmn

A Four-Year Program

Over its first four years, Centre Pompidou Hanwha will draw on Centre Pompidou's collection to showcase the major movements of 20th-century modern art and present a program reflecting the diversity of forms and experiments of the avant-garde.

Following the inaugural exhibition "The Cubists," the 2026-2027 season will be dedicated to Marc Chagall, Vassily Kandinsky, Henri Matisse, and Fauvism. Subsequent years will focus on Surrealism and abstract art, with special attention given to women artists, who have long been marginalized in art history. The first major retrospective of Constantin Brancusi in Korea will also be presented. Other projects will explore the origins of the digital revolution and artificial intelligence through early digital arts, offering new interpretations of iconic works from Centre Pompidou's collection.

"A museum is not just the building that houses it; it embodies a spirit, a set of values and skills that can be shared worldwide. This international dimension is essential to the identity of the Centre Pompidou, and the opening of Centre Pompidou Hanwha represents both an important milestone in our history and an unprecedented opportunity for exchange with new audiences and the prolific Korean cultural scene."

—**Laurent Le Bon, President of the Centre Pompidou**

"Centre Pompidou Hanwha will be an open museum where art, technology, and the future converge, offering a new way to encounter world-class modern and contemporary art in the heart of daily life in Seoul."

—**Sungsoo Lee, President of the Hanwha Foundation of Culture**

About Centre Pompidou Worldwide

Since 1977, Centre Pompidou has been a place of living, engaged culture—a multidisciplinary center deeply rooted in society and open to the world. In 2025, it embarked on a true metamorphosis, allowing it to remain active and dynamic throughout its renovation and until its reopening in 2030. Through the Constellation program, the spirit of Centre Pompidou is embodied in numerous partner locations in France and abroad, including Centre Pompidou-Metz, the Grand Palais, and soon Centre Pompidou Francilien in Massy.

For the past fifteen years, Centre Pompidou has strengthened its international presence through traveling exhibitions, exceptional loans, and lasting collaborations. This approach aims to disseminate its collections, share expertise, and create dialogues between artistic scenes, while contributing to French cultural diplomacy. The opening of Centre Pompidou around the world plays a key role in this strategy. Following Malaga in 2015 and Shanghai in 2019, two new international locations will open in Seoul and Brussels, marking an important step in the institution's history. Centre Pompidou favors tailored and evolving collaborations, confirming its role as a key player in the global circulation of art and museum practices.

Communication and Digital Media Department

Director

Geneviève Paire

Head of the press unit

Dorothee Mireux

Press Officer

Mia Fierberg

+33 01 44 78 13 77

mia.fierberg@centrepompidou.fr

centrepompidou.fr
@CentrePompidou
#CentrePompidou

Access all press releases and kits in our [press area](#)